

The ATU ESD Academy directly responds to the National Strategy of ESD to 2030, which provides the following definition that will frame its activities:

A collaboration with the ATU Teaching and Learning Centre and the Centre for Sustainability.

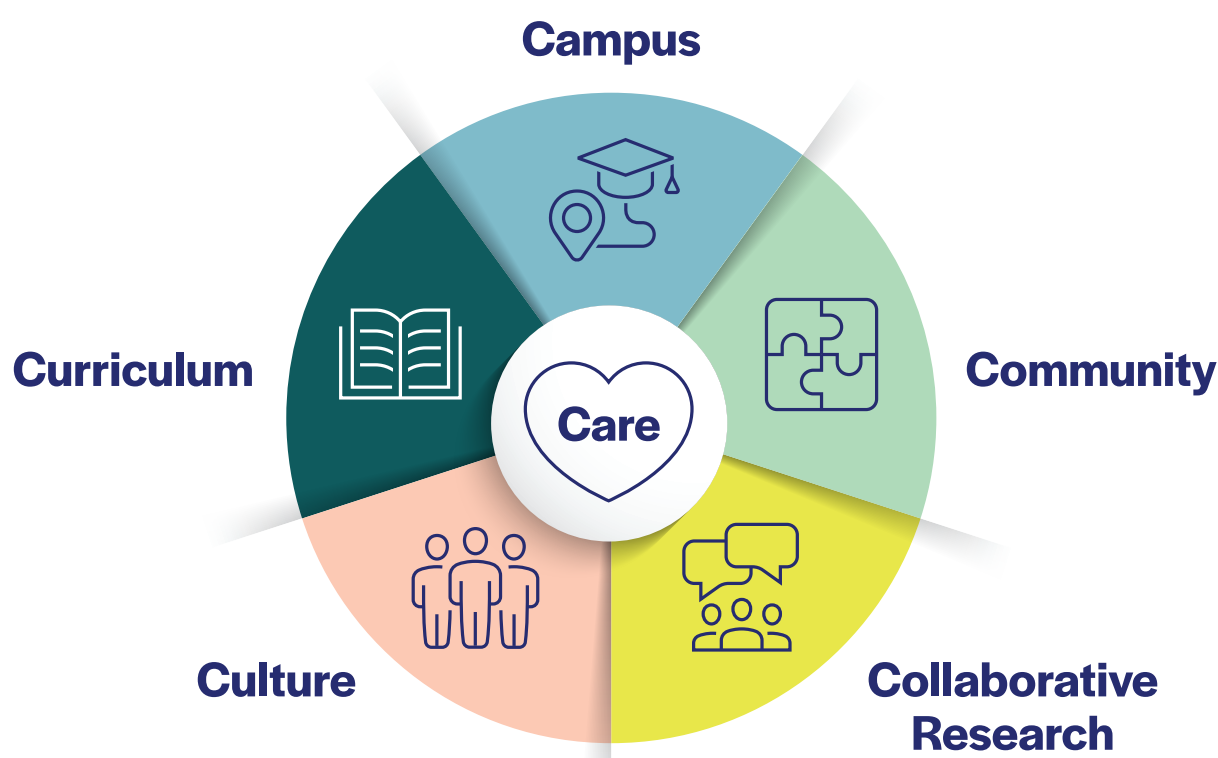
‘ESD empowers learners with knowledge, skills, values, and attitudes to take informed decisions and make responsible actions for environmental integrity, economic viability, and a just society empowering people of all genders, for present and future generations, while respecting cultural diversity.

ESD is a lifelong learning process and an integral part of quality education that enhances cognitive, social, and emotional and behavioural dimensions of learning. It is holistic and transformational and encompasses learning content and outcomes, pedagogy, and the learning environment itself.’

UNESCO (2021)

The ESD Academy will support ATU’s vision of ‘becoming an internationally renowned university that enhances the quality of life in our region and creates a sustainable future for all’ through the five guiding lights of enabling education, engaged research, a connected ecosystem, and sustainability for the future.

The ESD Academy will demonstrate leadership through a whole-of-university approach to embed sustainability, the United Nations Sustainable Development Goals (SDGs) and climate action and justice at the very core of the curriculum in ATU. The work will be framed by the 6Cs of Curriculum, Campus, Community, Collaborative Research, Culture, and Care.



Curriculum

Demonstrate ESD leadership by embedding sustainability, the SDGs, climate action and justice holistically across the curriculum cultivating transformative learning AS sustainability.



Campus

Promote and foster a sustainable and circular ‘living labs’ educational approach across each campus, to demonstrate operational excellence in sustainability transitioning towards zero carbon emissions.



Community

Promote and nurture community education initiatives focusing on capacity building and learning by doing through a genuine reciprocal relationship to learn FROM, WITH, and AS a community.



Collaborative Research

Establish ESD as a recognized research theme across teaching and learning, research, community and industry engagement, campus management and operations.



Culture

Collaborate across faculties, functional units, and research centres and groups to support a transition towards a ‘Climate Action University’, which will demonstrate a genuine and transparent commitment to sustainability, the SDGs, climate action and the circular economy through our own actions and values.



Care

The ESD Academy will embrace the ethics and practice of care in all its activities.

Contact

ATU Teaching and Learning Centre, ESD Academy

TLC@ATU.ie

ESD Academy Leads: Mark.Kelly@atu.ie or John.Scahill@atu.ie

T&L Centre ESD Lead: Dr Carina Ginty